

TEST REPORT

| | | |
|--------------------|--|---------------------------|
| Report No | : AL07040322 | |
| Company Name | : Richport Technology Pte Ltd | |
| Address | : No. 107 Neythal Road Singapore 569510 | Page 1 of 2 |
| Our Reference | : ENV 2006-741/K | Your Reference : - |
| Date Received | : 19-Apr-07 | Date Reported : 20-Apr-07 |
| Date Tested | : 19-Apr-07 to 20-Apr-07 | |
| Sample Description | : One (1) metal sample was received with the following reference: CLEAR CHROMATE | |

RESULTS

Based on analysis, the following results were obtained:


| Test Items | Result | Unit | Test Method | Equipment used | MDL |
|-------------------------------------|--------|------|-----------------|------------------|-----|
| Cadmium & its compounds | < 1 | ppm | EPA 3052 | ICP-OES | 1 |
| Lead & its compounds | 29 | ppm | EPA 3052 | ICP-OES | 1 |
| Hexavalent Chromium & its compounds | < 1 | ppm | EPA 3060A/7196A | UV-VIS | 1 |
| Mercury & its compounds | < 1 | ppm | EPA 3052 | Mercury Analyzer | 1 |

Note: (1) < = Less Than


(2) All tested items are expressed in ppm, which equivalent to mg/kg

(3) Method reference:


- (i) Determination of Cadmium and Lead with reference to EPA 3052, and measured by ICP-OES. Model: PE Optical 2100DV, Serial No:080N5030201.
- (ii) Determination of Hexavalent Chromium with reference to EPA 3060A/7196A, and measured by UV-VIS. Model: PE Lambda 35, Serial No:101N4081001
- (iii) Determination of Mercury with reference to EPA 3052, and measured by mercury analyzer. Model: PE FIMS 100, Serial No:101S5050403.



Lye Pey Pey
Chemist



William Pang
Laboratory Manager



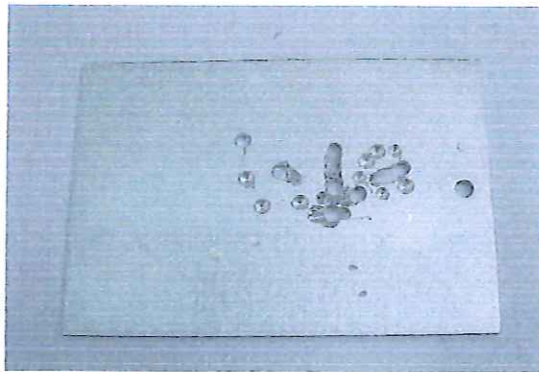
The results reported herein comply with the requirements specified in ISO/IEC 17025.

ATTACHMENT

Report No : AL07040322
Company Name : Richport Technology Pte Ltd
Address : No. 107 Neythal Road
Singapore 569510

Page 2 of 2

CLEAR CHROMATE



-END-

The results reported herein comply with the requirements specified in ISO/IEC 17025.